



# Dungeness Crab Task Force: Whale Safe Fisheries Project Updates

November 2-3, 2023

# Updates and discussion topics:



RAMP

RAMP 2.0

Line marking

Conservation  
Plan

# 2023-24 RAMP Implementation



CDFW and numerous collaborators collecting data



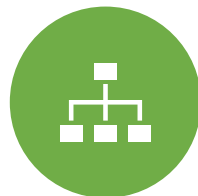
Risk Assessments = bi-weekly basis



Data publicly available



Working Group recommendations (5 meetings scheduled through January)



Need for management action – decision by CDFW Director



Whale Safe Fisheries page/listserv updates





# 2023-24 Risk Assessments

## ❖ Anticipated WG Meeting Dates

- **October 25**
  - Informs Nov 15<sup>th</sup> CMA & Nov 4<sup>th</sup> Rec opener
- **November 15**
  - Informs Dec 1<sup>st</sup> CMA and NMA opener
- **December 5**
  - Informs Dec 15<sup>th</sup> CMA and NMA opener
- **December 19**
  - Informs Dec 31<sup>st</sup> CMA and NMA opener
- **January 11**
  - Informs Jan 15<sup>th</sup> CMA and NMA opener

## CDFW 2023-24 Season Opening Timeline Using Pre-determined Date Approach (subject to change)

Data collection period	CDFW analysis window	WG Meeting Date	Anticipated CDFW Decision/Notification Date		Pre-soak/Opening Dates	
Sunday October 8	Monday October 9	Tuesday October 10	Wednesday October 11	Thursday October 12	Friday October 13	Saturday October 14
October 15	October 16	October 17	October 18	October 19	October 20	October 21
October 22	October 23	October 24	October 25	October 26	October 27	October 28
			Working Group Meeting	Decision Window CMA 11/15 opener and 11/4 Recreational	Decision Window CMA 11/15 opener and 11/4 Recreational	
October 29	October 30	October 31	November 1	November 2	November 3	November 4
						Rec Opener or Trap Restriction (potential)
November 5	November 6	November 7	November 8	November 9	November 10	November 11
					STATE HOLIDAY	
November 12	November 13	November 14	November 15	November 16	November 17	November 18
11/15 CMA pre-soak (potential)	11/15 CMA pre-soak (potential)	11/15 CMA pre-soak (potential)	Working Group Meeting  CMA Opener or Delay	Decision Window CMA/NMA 12/1 opener and Recreational	Decision Window CMA/NMA 12/1 opener and Recreational	

November 19	November 20	November 21	November 22	November 23	November 24	November 25
				STATE HOLIDAY	STATE HOLIDAY	
November 26	November 27	November 28	November 29	November 30	December 1	December 2
		12/1 NMA & CMA pre-soak (potential)	12/1 NMA & CMA pre-soak (potential)	12/1 NMA & CMA pre-soak (potential)	NMA & CMA Potential Opener	
December 3	December 4	December 5	December 6	December 7	December 8	December 9
		Working Group Meeting	Decision Window CMA/NMA 12/15 opener and Recreational	Decision Window CMA/NMA 12/15 opener and Recreational		
December 10	December 11	December 12	December 13	December 14	December 15	December 16
			NMA & CMA 12/16 pre-soak (potential)	NMA & CMA 12/16 pre-soak (potential)	NMA & CMA 12/16 pre-soak (potential)	NMA & CMA Potential Opener
December 17	December 18	December 19	December 20	December 21	December 22	December 23
		Working Group Meeting	Decision Window CMA/NMA 12/31 opener and Recreational	Decision Window CMA/NMA 12/31 opener and Recreational		
December 24	December 25	December 26	December 27	December 28	December 29	December 30
	STATE HOLIDAY			NMA & CMA 12/31 pre-soak (potential)	NMA & CMA 12/31 pre-soak (potential)	NMA & CMA 12/31 pre-soak (potential)
December 31	January 1	January 2	January 3	January 4	January 5	January 6
NMA & CMA Potential Opener						





# 2022-23 Entanglement Summary

## Humpback Whales

- Confirmed in CA Commercial Dungeness Crab Gear: **3**
  - June 11: Humpback, Monterey (0.75)
  - July 19 : Humpback, Moss Landing (0.75)
  - August 19 : Humpback, Monterey (0.75)
- Confirmed entanglements in Unknown Fishing Gear off CA: **3**
  - April 17: Humpback, Monterey (0.38)
  - April 20: Humpback, Monterey (0.38)
  - May 12: Humpback, Monterey (0) *\*mooring line*

# 2022-23 Impact Score Summary

## ❖ End of Season Impact Scores

Impact Scores	Humpback Whales
22/23 Fishing Season	1.51
Calendar Year	1.51
3-Year Average	2.89



## ❖ Current Impact Scores

Impact Scores	Humpback Whales
22/23 Fishing Season	1.51
Calendar Year*	3.01
3-Year Average*	3.39

\*summer entanglements

### Management Triggers:

- During Fishing Season: Impact Score Calculation of **three (3)** or more is reached, the Director will close the remainder of the Fishing Season statewide.
- 3-Year Average: if score exceeds **two (2)**, the Director shall consult with NOAA and the Working Group. After consultation, the Director shall implement a management action(s)



# RAMP 2.0

- Timeline for notice = February 2024
- Regulations effective = October 2024
- Updates include:
  - Definitions
  - Management actions
    - Surface gear prohibition
    - Modified trap servicing
  - Electronic monitoring
  - Buoy marking
  - Line marking
  - Alternative gear

# Line Marking Overview

- Entangling gear type is unknown for ~50% of whale entanglements annually
- Accounting for “take” is an essential element of the Conservation Plan
- WA, OR and CA worked together to develop a coordinated approach
- “On water” work was conducted this past summer
- Focus to date as been on manufactured line



# Line colors

Common line colors currently used by commercial Dungeness crab fishermen

Photo taken by Sheila Garber, Englund Marine and Supply



Potential line marking color patterns: black indicates commercial Dungeness crab and other color identifies the state

Photos taken by CDFW





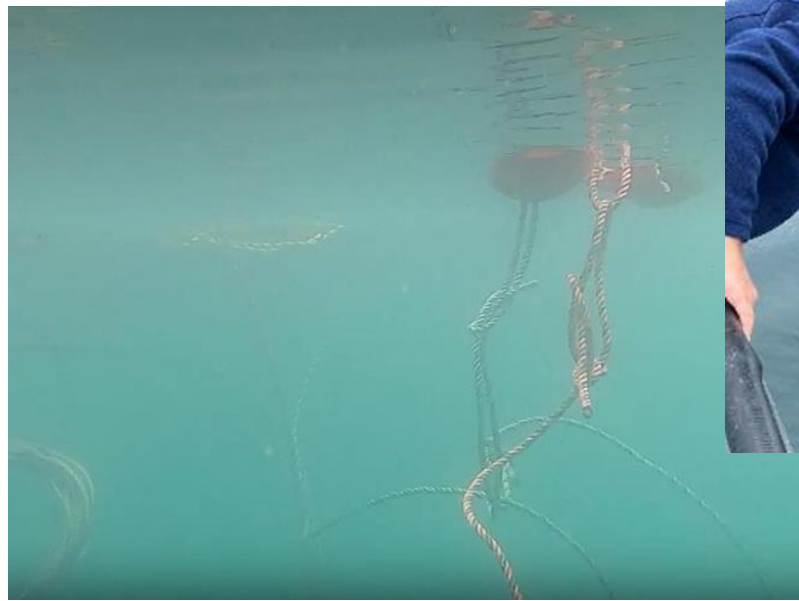


## “Testing Phase”

- Line color and pattern visible in lines draped over the “entangled whale”
- Similar to documentation of entangled whales with a body wrap



“In-water testing”





# Alternative marking = painting

## Considerations

- Painting methods
- Mark size = 12 inches
- Cost vs manufactured line





# Conservation Plan

- Reorganizing and updating
  - Expected submission in late 2023
  - Permit term = 15 years
  - Covers humpback whales, blue whales and Pacific leatherback sea turtles
  - Include Best Available Science
  - Submission begins 2-year review process
  - Public input opportunities
- \* Take Reduction Plan also in progress (sablefish)*

END