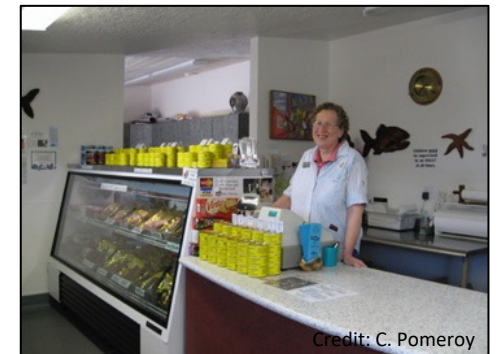


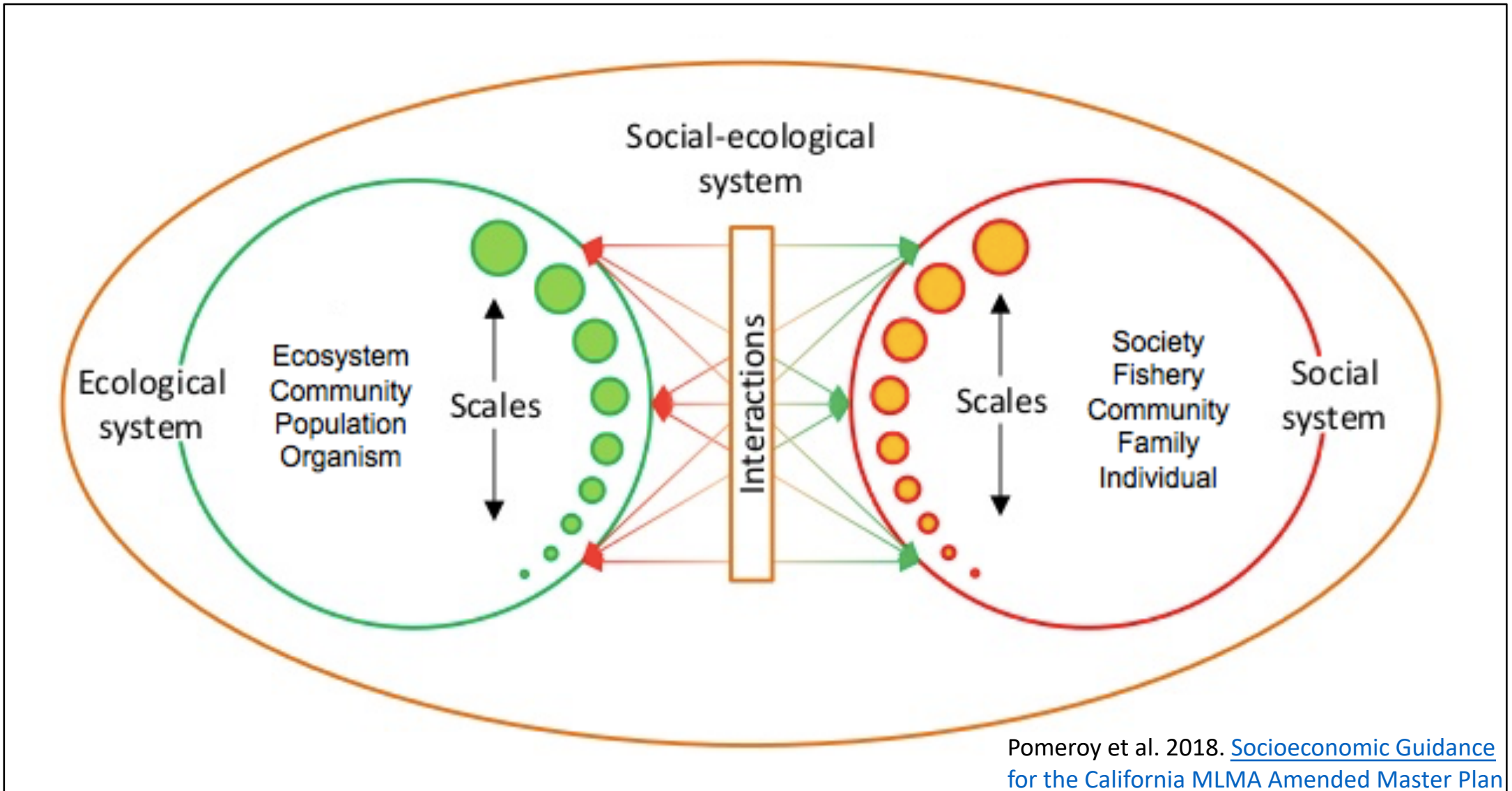
Social and economic considerations for addressing West Coast entanglements

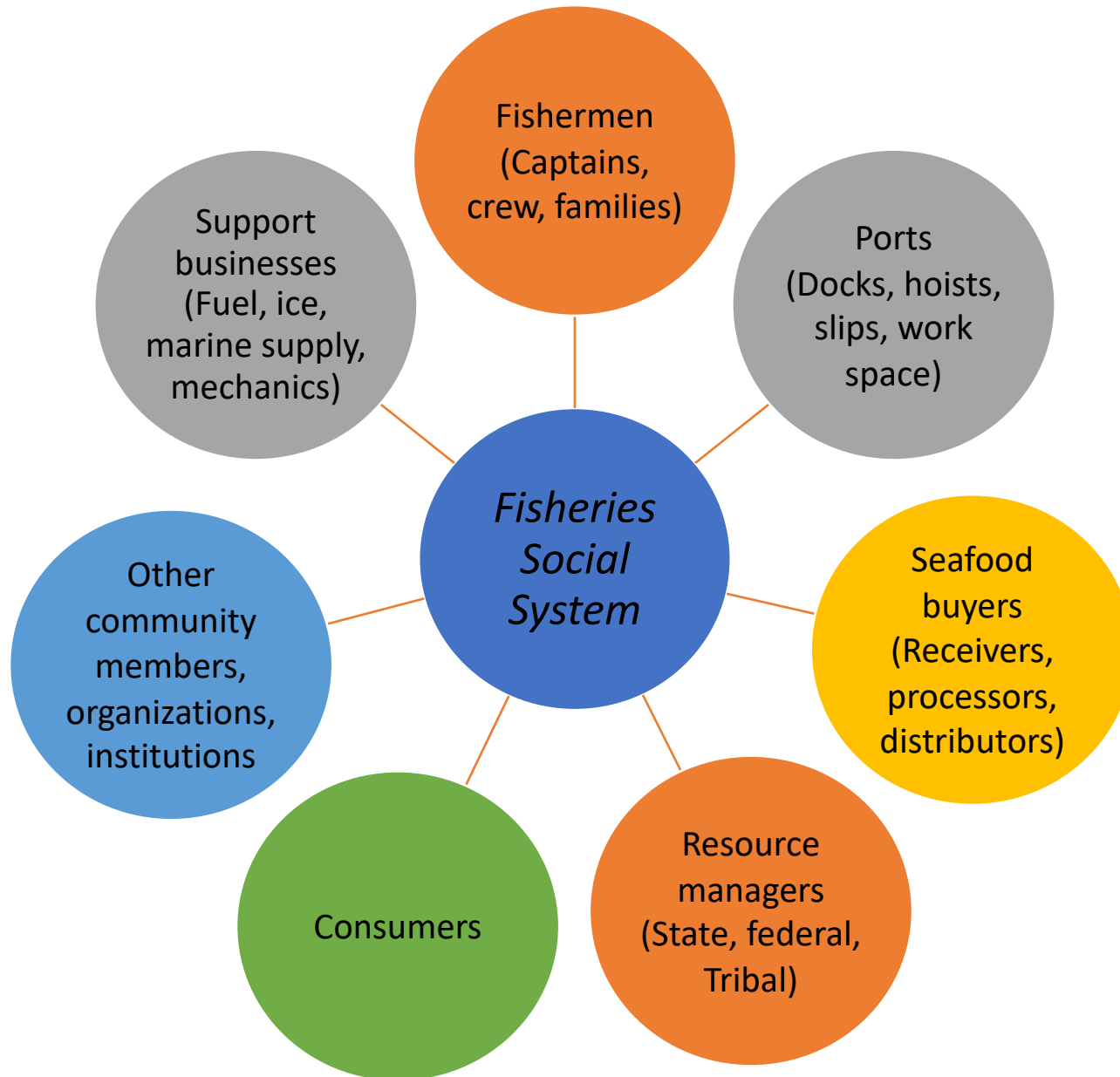
Carrie Pomeroy, PhD
Research Social Scientist
UC Santa Cruz

West Coast Entanglement Science Workshop
September 1st, 2020



Fisheries as social-ecological systems





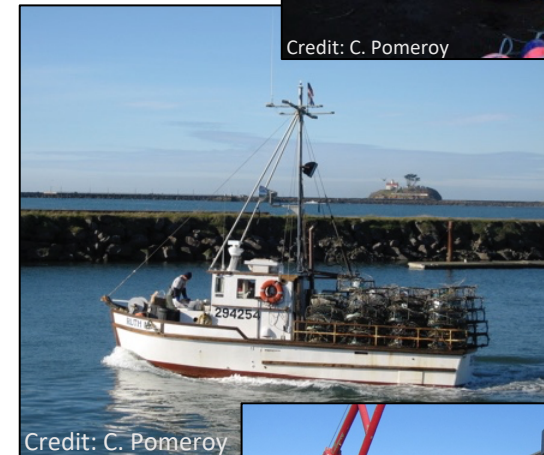
Socioeconomic “Essential Fishery Information”

- Demographics
- Operations
- Practices
- Values, preferences, needs
- Attitudes, opinions, beliefs
- Institutions
- Relationships and networks
- Capital
- Employment
- Expenditures
- Revenues
- Environmental factors
- Macroeconomic factors

Managing entanglements: Some social and economic questions

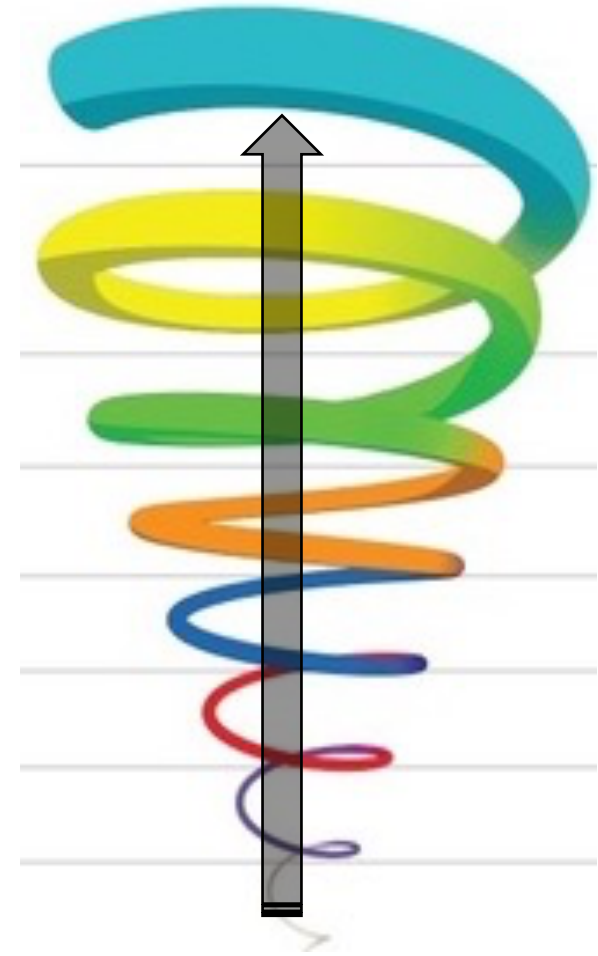
How do management options affect...

- space use in the fishery, viz. other fisheries, other uses?
- timing and location of shoreside infrastructure use and operations?
- relationships among fishermen, buyers, shoreside support providers, other community members, managers, consumers?
- social and economic well-being of fishery participants, families, communities?



Iterative, stepwise process

- *Building the social baseline*
Characterize the fishery's human system
- *Scoping*
Identify fishery/issue-specific questions and options
- *Selecting relevant social variables for investigation*
Identify key concepts and associated variables suggested by management questions
- *Synthesizing and analyzing data to address management question*
Use appropriate analytical approaches to compare management impacts and outcomes for individuals, groups and communities



Data streams, information, understanding and application

- Data v. information v. understanding
- Range and relevance of socioeconomic “essential fishery information”
- Appropriate methodologies
 - qualitative
 - quantitative
- Integrate diverse sources
 - available data and other information
 - documents and other media
 - fishery participants’, managers’ and others’ knowledge
 - ground-truthing is critical



Credit: C. Portnoy

Contact

Carrie Pomeroy
Research Social Scientist
Institute of Marine Sciences, UC Santa Cruz
cpomeroy@ucsc.edu

Acknowledgements

Debbie Aseltine-Neilson, Ryan Bartling, Nikki Georgilas
Christy Juhasz and the California Dungeness Crab Task
California fishing community members

California Ocean Protection Council
California Sea Grant Program
Resources Legacy Fund
UC Santa Cruz



Speakers and panelists

- Shannon Davis, The Research Group
- Rachel Seary, SWFSC
- Carrie Pomeroy, UC Santa Cruz
- Richard Axelson, Commercial Fisherman, CA
- Dale Beasley, Commercial Fisherman, WA
- Caren Braby, ODFW
- Cari Brandberg, Living Pacific Seafood, Chelsea Rose Seafood, OR
- Heather Hall, WDFW
- Sonke Mastrup, CDFW
- Susan Rotwein, Commercial Fisherman, CA
- Jameal Samhuri, NWFSC
- Gil Sylvia, OSU
- Larry Thevik, Commercial Fisherman, WA

