




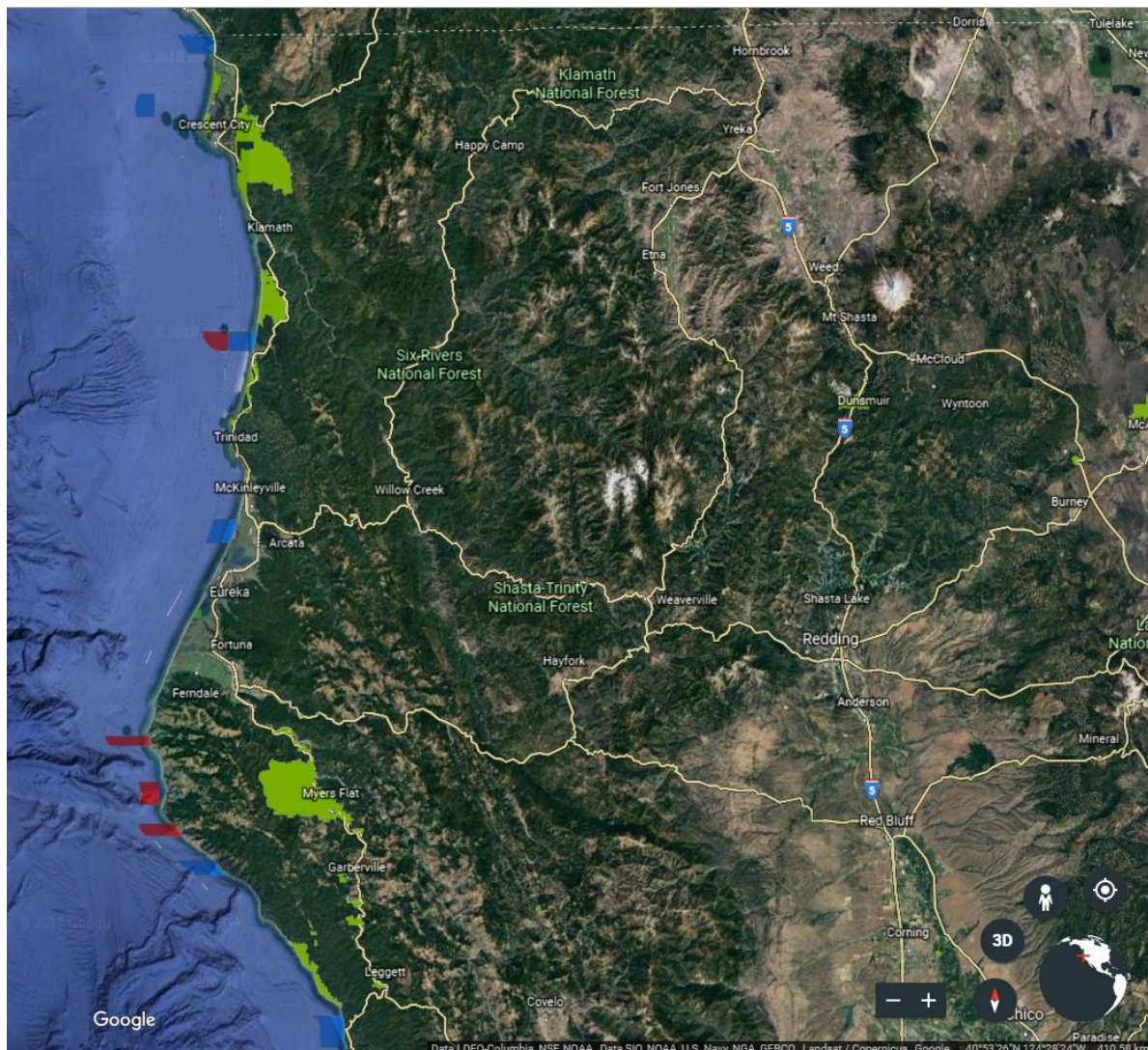


EXHIBIT A
Map of Parks Project Sites

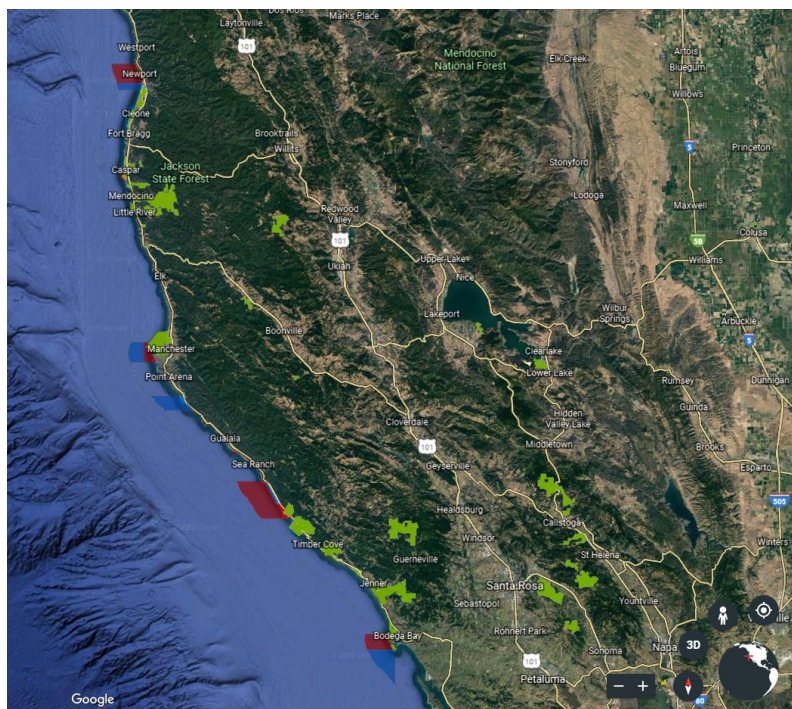
LEGEND

	State Park Unit
	State Marine Reserve
	State Marine Conservation Area
	State Marine Park
	State Marine Recreational Management Area

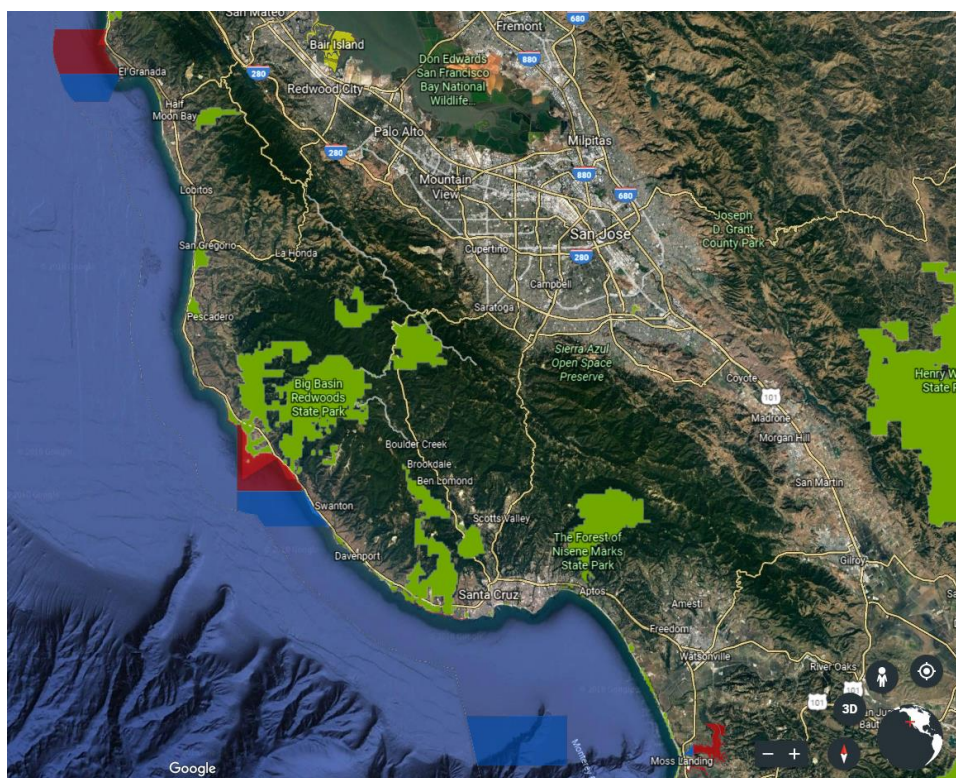
North Coast Redwoods District



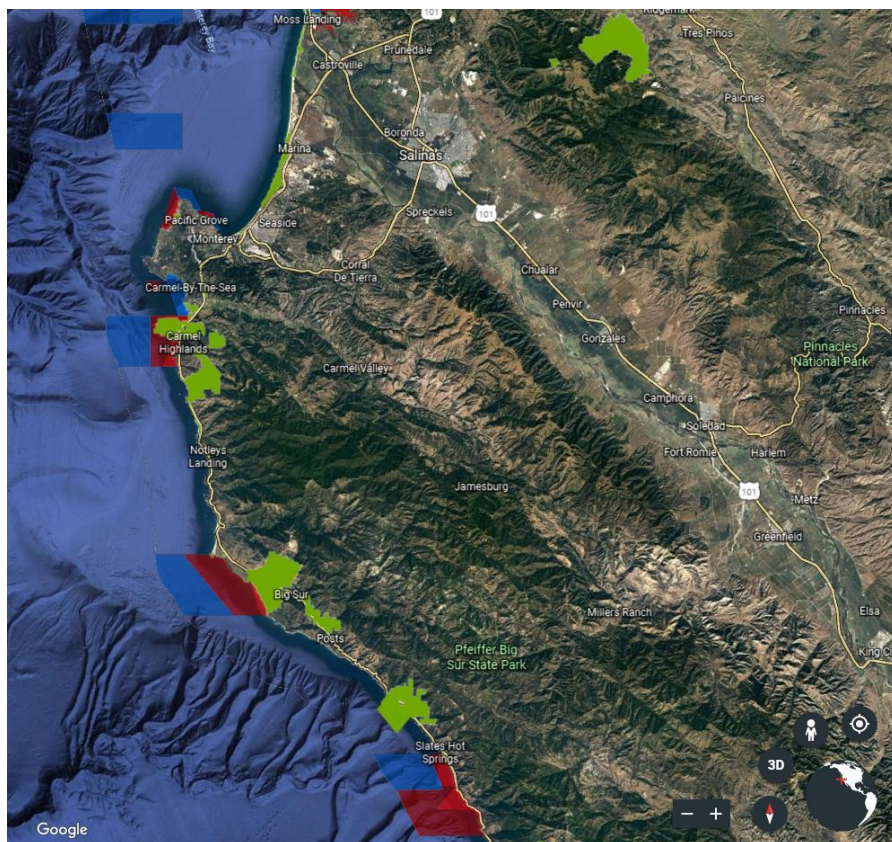
Sonoma-Mendocino District



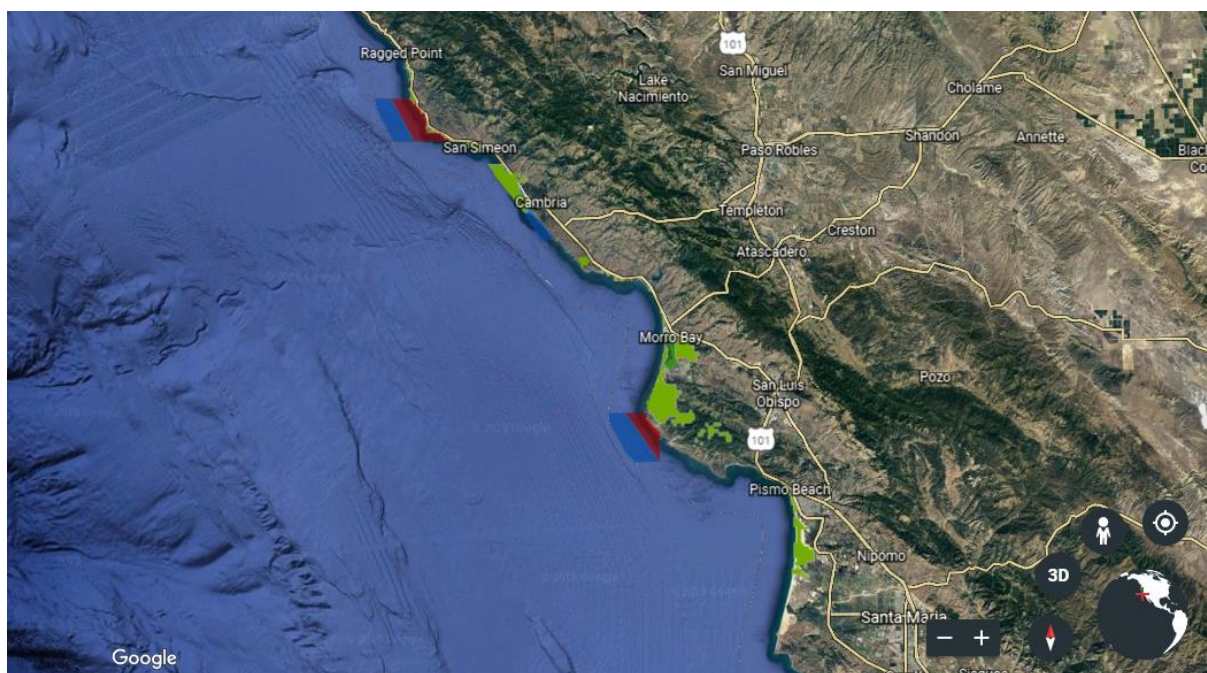
Santa Cruz District



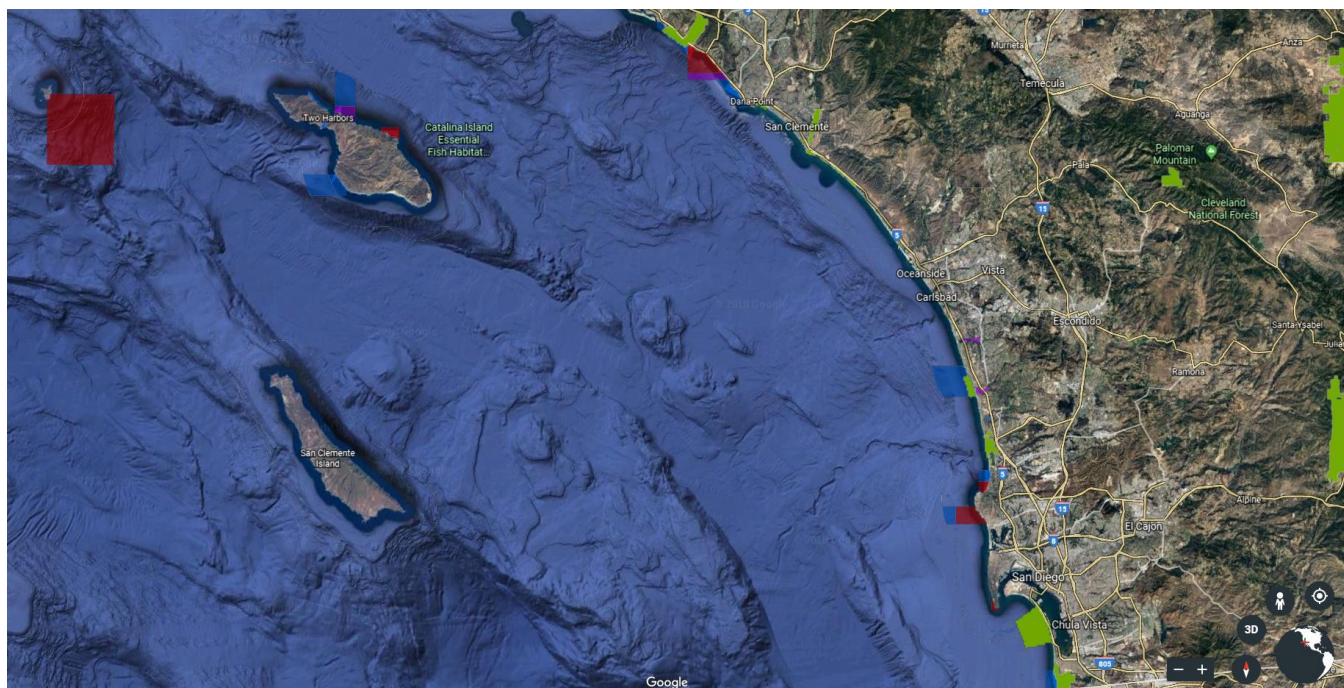
Monterey District



San Luis Obispo District



Orange and San Diego Coast Districts



California State Parks Co-located with Marine Protected Areas	
State Park Unit	Marine Protected Area
North Coast Redwoods District	
Pelican SB	Pyramid Point SMCA
Sonoma-Mendocino District	
Mackerricher SP	Ten Mile Estuary SMCA Ten Mile SMR Ten Mile Beach SMCA Mackerricher SMCA
Point Cabrillo Light Station SHP Russian Gulch SP Mendocino Headlands SP Van Damme SP Navarro River Redwoods SP	Point Cabrillo SMR Russian Gulch SMCA Big River Estuary SMCA Van Damme SMCA Navarro River Estuary SMCA
Manchester SP	Point Arena SMR
Salt Point SP	Stewarts Point SMR Salt Point SMCA Gerstle Cove SMR
Sonoma Coast SB	Russian River SMCA Russian River SMRMA Bodega Head SMR Bodega Head SMCA
Santa Cruz District	
Montara SB	Montara SMR
Año Nuevo SP Big Basin Redwoods SP	Año Nuevo SMCA
Wilder Ranch SP Natural Bridges SB	Natural Bridges SMR
Monterey District	
Asilomar SB	Asilomar SMR
Carmel River SB	Carmel Bay SMCA
Point Lobos SR	Point Lobos SMR
Point Sur SHP Andrew Molera SP	Point Sur SMR
San Luis Obispo Coast District	
Hearst San Simeon SP	Piedras Blancas SMR Cambria SMP
Morro Bay SP Montaña de Oro SP	Morro Bay SMRMA
Orange Coast District	
Crystal Cove SP	Crystal Cove SMCA
San Diego Coast District	
San Elijo SB Cardiff SB	Swami's SMCA
Border Field SP	Tijuana River Mouth SMCA

Acronyms:

SB = state beach

SHP = state historic park

SMCA = state marine conservation area

SMR = state marine reserve

SMRMA = state marine recreational management area

SMP = state marine park

SP = state park

SR = state reserve