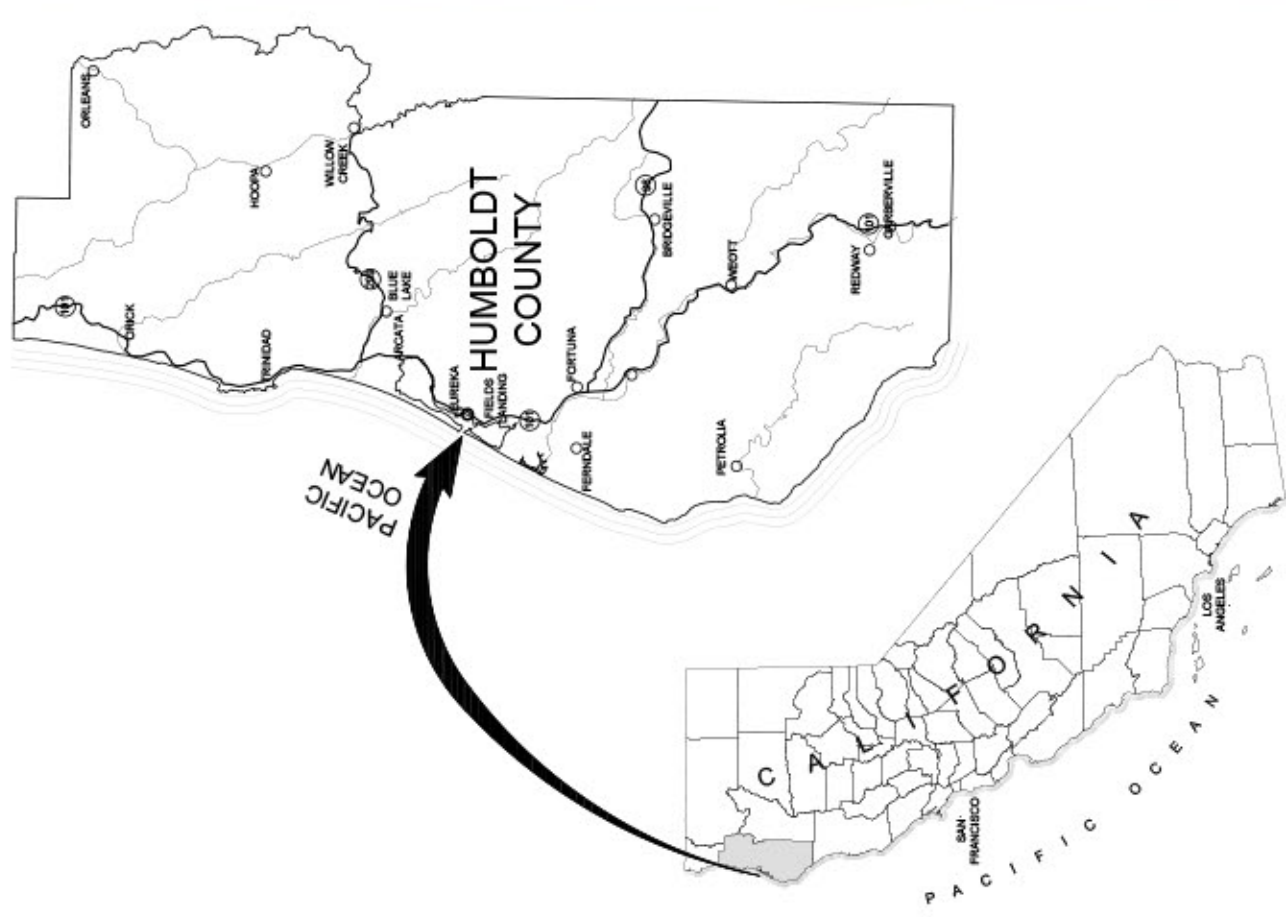


Item 6f - Exhibit 2: Site Designs and Photos

ELK RIVER ESTUARY AND TIDAL ENHANCEMENT PROJECT

JUNE 2017

AREA MAP



VICINITY MAP



SHEET INDEX

SHEET NO.	TITLE
C-1	COVER SHEET AND SHEET INDEX
C-2	GENERAL NOTES
C-3	EXISTING FEATURES
C-4	EXISTING TOPOGRAPHY
C-5	EXISTING HYDROLOGY
C-6	EXISTING VEGETATION TYPES AND AREAS
C-7	ESTUARY AND WETLAND DEVELOPMENT PLAN
C-8	DESIGN TOPOGRAPHY
C-9	POST-DEVELOPMENT VEGETATION TYPES AND AREAS
C-10	AREA 1 GRADING PLAN
C-11	AREA 1 CHANNEL CROSS SECTIONS AND PROFILE
C-12A, 12B	AREA 2 GRADING PLAN
C-13	AREA 2 CHANNEL CROSS SECTIONS AND PROFILE
C-14	AREA 2 TIDAL RIDGE
C-15	SPARTINA ERADICATION PLAN
C-16	AREA 1 BOAT RAMP
C-17	DETAILS

65% DESIGN PLAN SET



EXISTING FEATURES
11x17 SCALE: 1"=400'
24x36 SCALE: 1"=200'

0 200 400 Feet

North Arrow

C-3

DRAWING NUMBER

SCALE

DATE: 12/20/16

Checked By: JLS

Drawn By: JLS

Project: ELK RIVER ESTUARY AND TIDAL ENHANCEMENT

City of Eureka

PROJECT

ELK RIVER ESTUARY AND TIDAL ENHANCEMENT

CITY OF EUREKA

EXISTING FEATURES

Trinity Associates

GREENWAY PARTNERS

1385 8TH STREET, SUITE 201, ARCATA, CA 95521

(707) 822-0987

GREENWAY

Solving community challenges

LICENSE STAMP

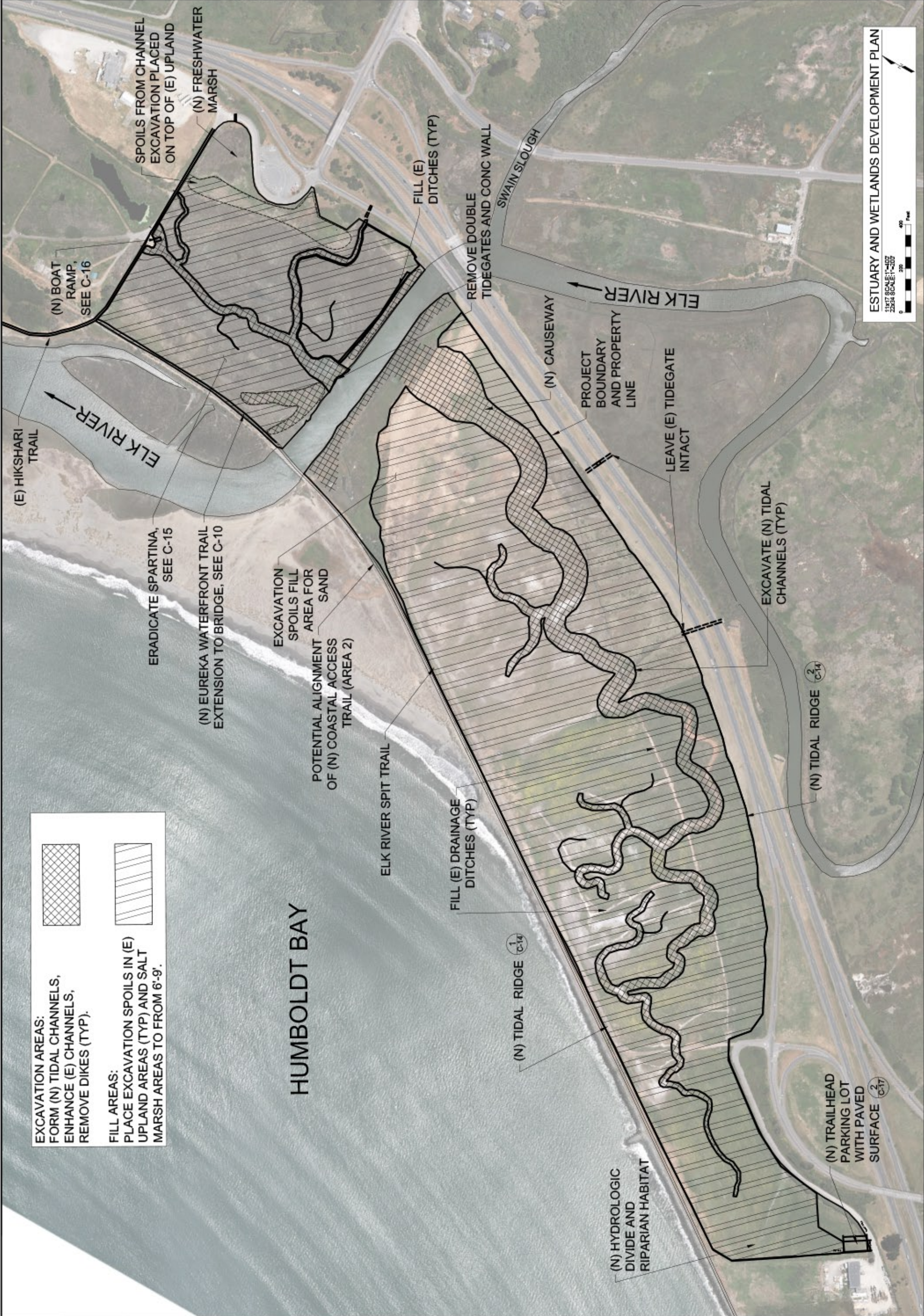
REVISION

DATE

EXCAVATION AREAS:
FORM (N) TIDAL CHANNELS,
ENHANCE (E) CHANNELS,
REMOVE DIKES (TYP).

FILL AREAS:
PLACE EXCAVATION SPOILS IN (E)
UPLAND AREAS (TYP) AND SALT
MARSH AREAS TO FROM 6'-9'.

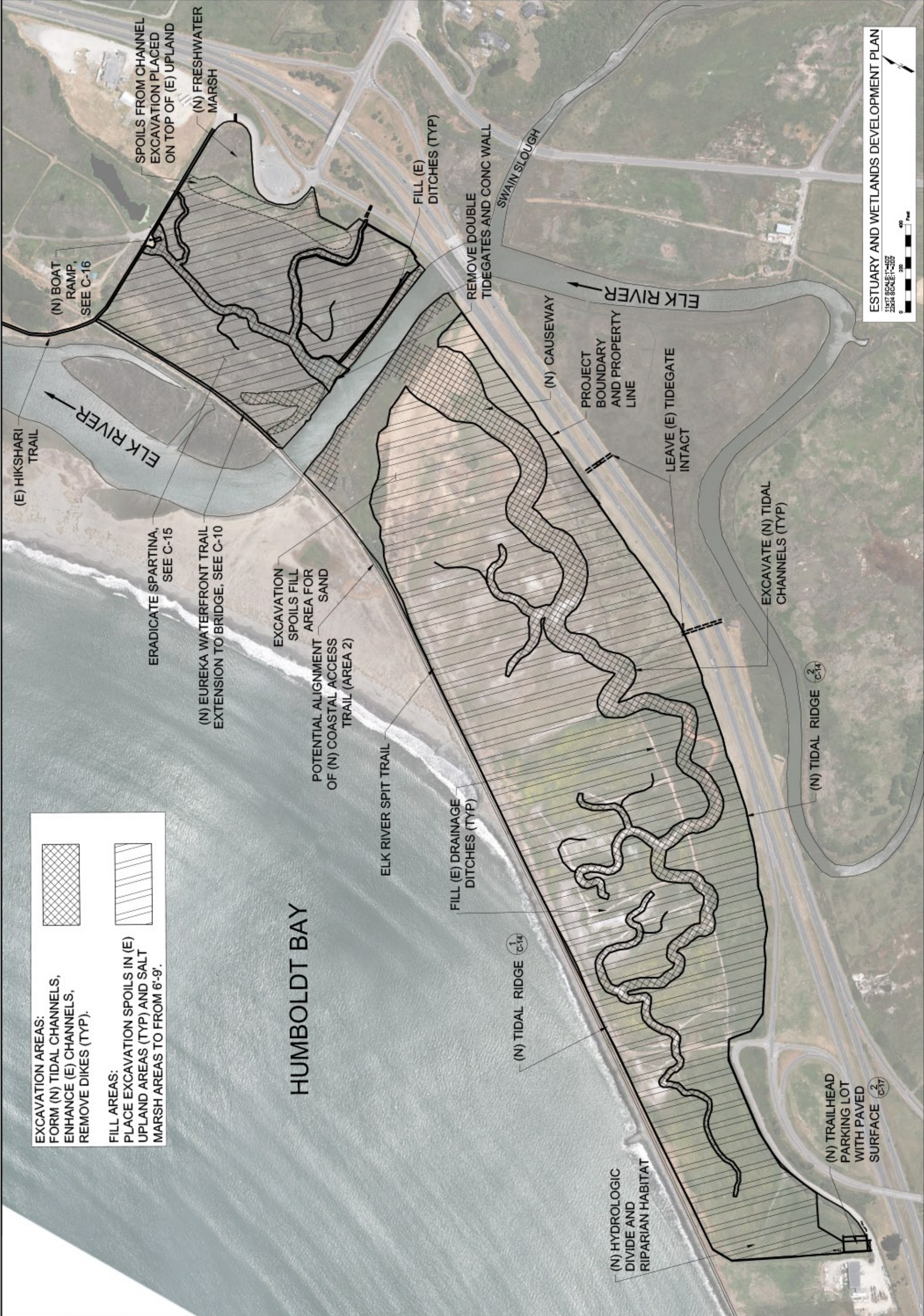
HUMBOLDT BAY



EXCAVATION AREAS:
FORM (N) TIDAL CHANNELS,
ENHANCE (E) CHANNELS,
REMOVE DIKES (TYP).

FILL AREAS:
PLACE EXCAVATION SPOILS IN (E)
UPLAND AREAS (TYP) AND SALT
MARSH AREAS TO FROM 6'-9'.

HUMBOLDT BAY



ESTUARY AND WETLANDS DEVELOPMENT PLAN

11407 SCALE: 1"=400'
12534 SCALE: 1"=200'

0 200 400 Feet

C-7

DRAWING NUMBER

DATE	12/20/16
Drawn By:	AS
Checked By:	AS
Scale:	AS NOTED

ESTUARY AND WETLANDS
DEVELOPMENT PLAN
PROJECT
BLK RIVER ESTUARY AND TIDAL ENHANCEMENT
CITY OF EUREKA
EUREKA, CA 95501



Trinity Associates
GREENWAY PARTNERS
1385 8TH STREET, SUITE 201 ARCAT A, CA 95521
(707) 822-0987
greenway
Solving community challenges

LICENSE STAMP

REVISION	DATE
1	
2	
3	
4	
5	
6	
7	
8	
9	
10	

Elk River Estuary Restoration OPC Proposal
Site Photographs



Existing dike and tide gates on right bank of Elk River in Area 1. This tidegate will be removed.



Spartina dominated salt marsh and fill from Highway 101 looking west in Area 1. Spartina will be removed and native marsh vegetation restored.

Elk River Estuary Restoration OPC Proposal
Site Photographs



Area 2 grazed pasture on diked historic tidelands. Looking east towards Hwy 101. Pasture will be restored to tidal marsh.



Area 2 grazed pasture, looking west to railroad berm. Pasture will be restored to tidal marsh.



Looking west at the existing railroad grade adjacent to Area 2 after the 2015-2016 king tides and storm surge erosion, showing washout of ballast into Area 2. A tidal ridge will be constructed along the railroad grade, preventing further washout of ballast into the area to be restored to marsh.