

Item 6e - Exhibit 2: Site Graphics

Martin Slough Enhancement Project

PROJECT ELEMENTS

(Numbers in circles refer to Reach number)

Marsh Planes A & B (0.75 & 2.3 acres) - salt marsh plain 50 ft wide paralleling slough channel and 70 ft wide along abandoned meander.

C (1.7 acres) - salt marsh with low elevation pond connected to springs.

D&E (0.8 & 1.3 acres) - expanded brackish wetlands, containing deep open water, littoral benches and elevated outlet sill that minimizes salinity intrusion during wet season.

F (1.7 acres) - backwater slough with island and deep open water and littoral bench on inside of bend.

G (0.5 acres) - predominantly freshwater alcove pond, Deep open water with emergent vegetation along banks.

North Fork Trib. (0.8 acres) - restored channel with march plain and side channel.

South East Trib. (0.3 acres) - restored channel with small freshwater pond connected to existing tributary.



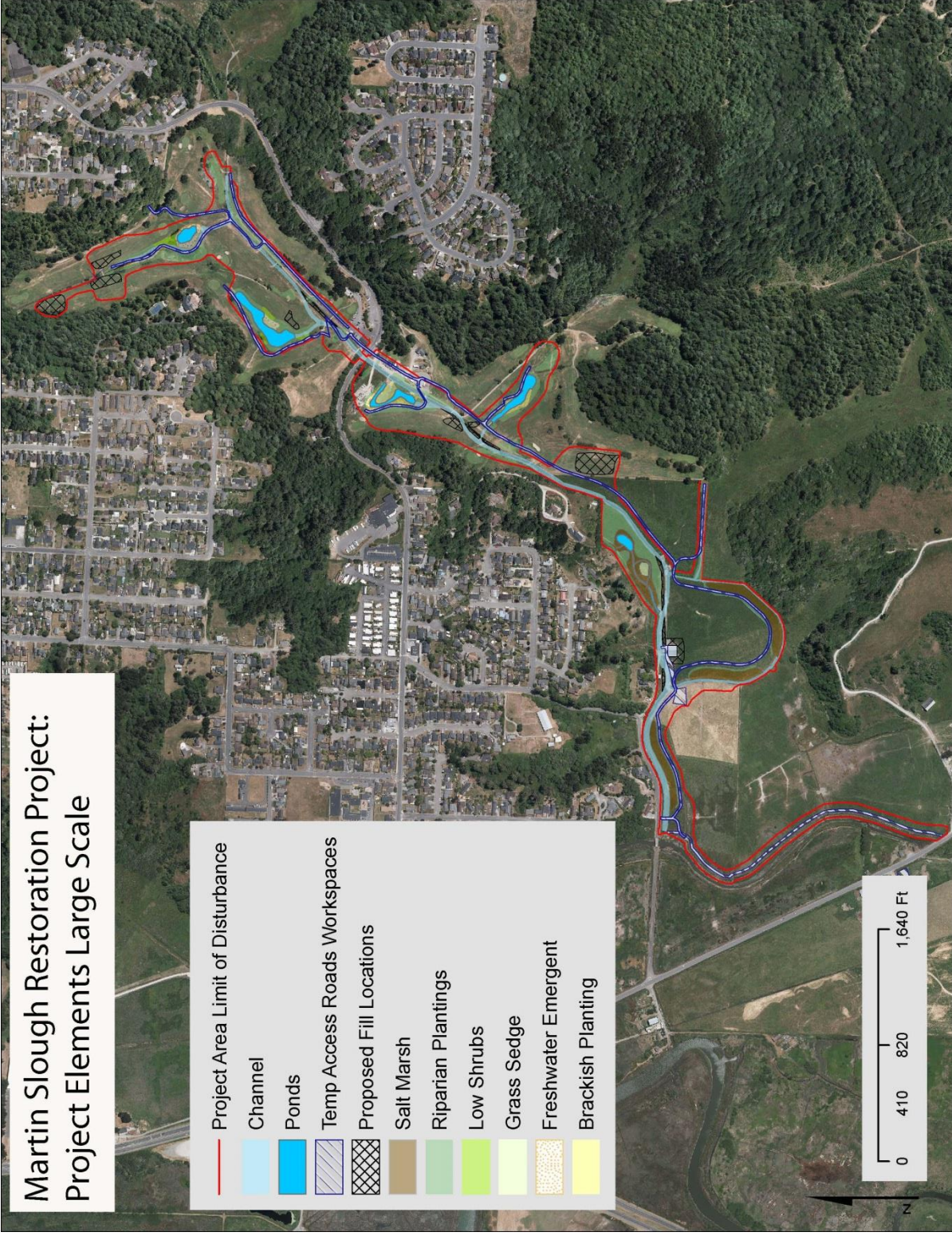


Figure 2. Martin Slough Restoration Project, Project Elements, Large Scale.

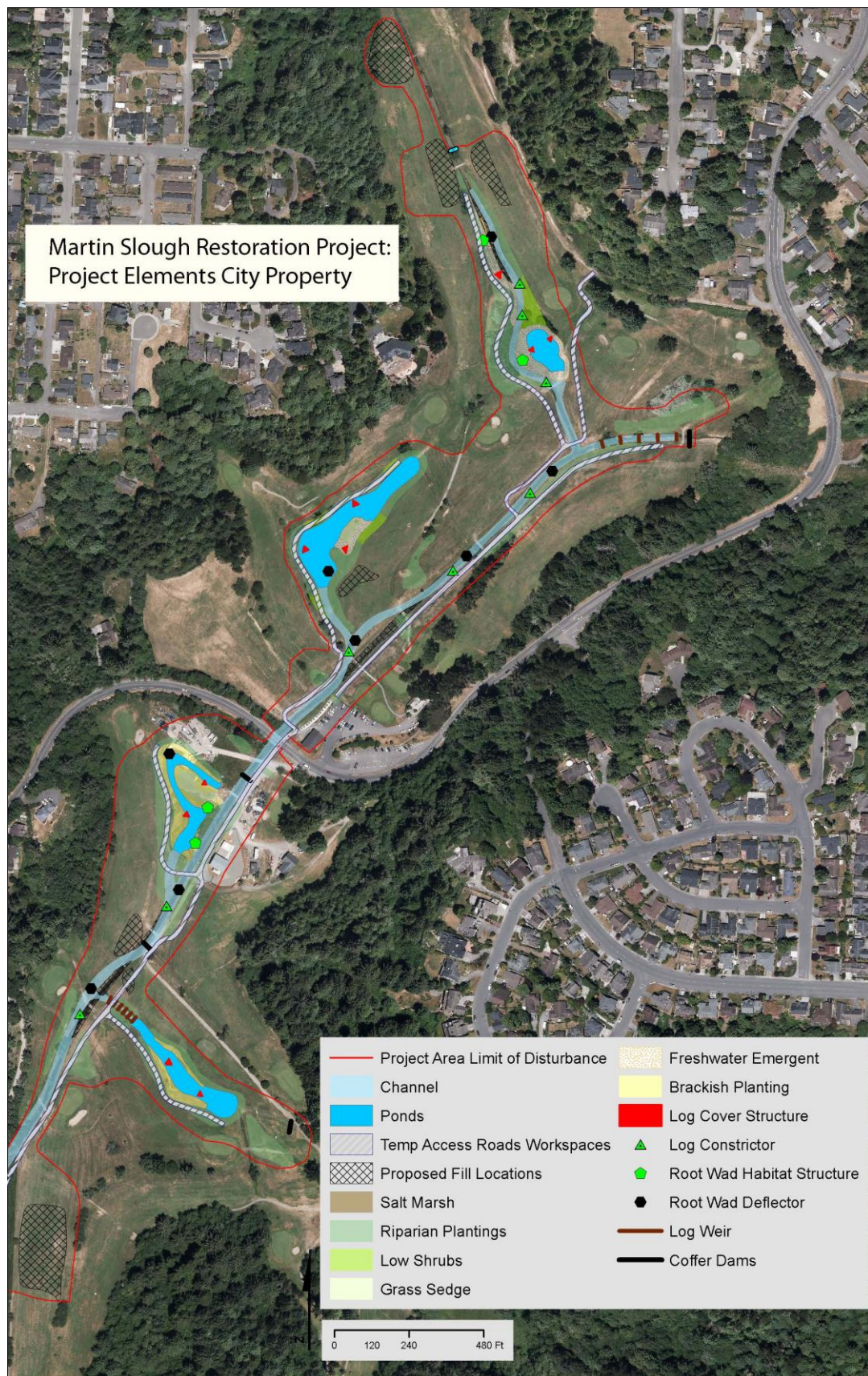


Figure 4. Martin Slough Restoration Project, City of Eureka Property