

Item 6d - Exhibit 1: Site Map and Location

Figure 1: Regional Map.

Figure 2: Site Map. The current 61-acre restoration includes areas M1-M3 and H1. The areas included in this proposal are M4-6.

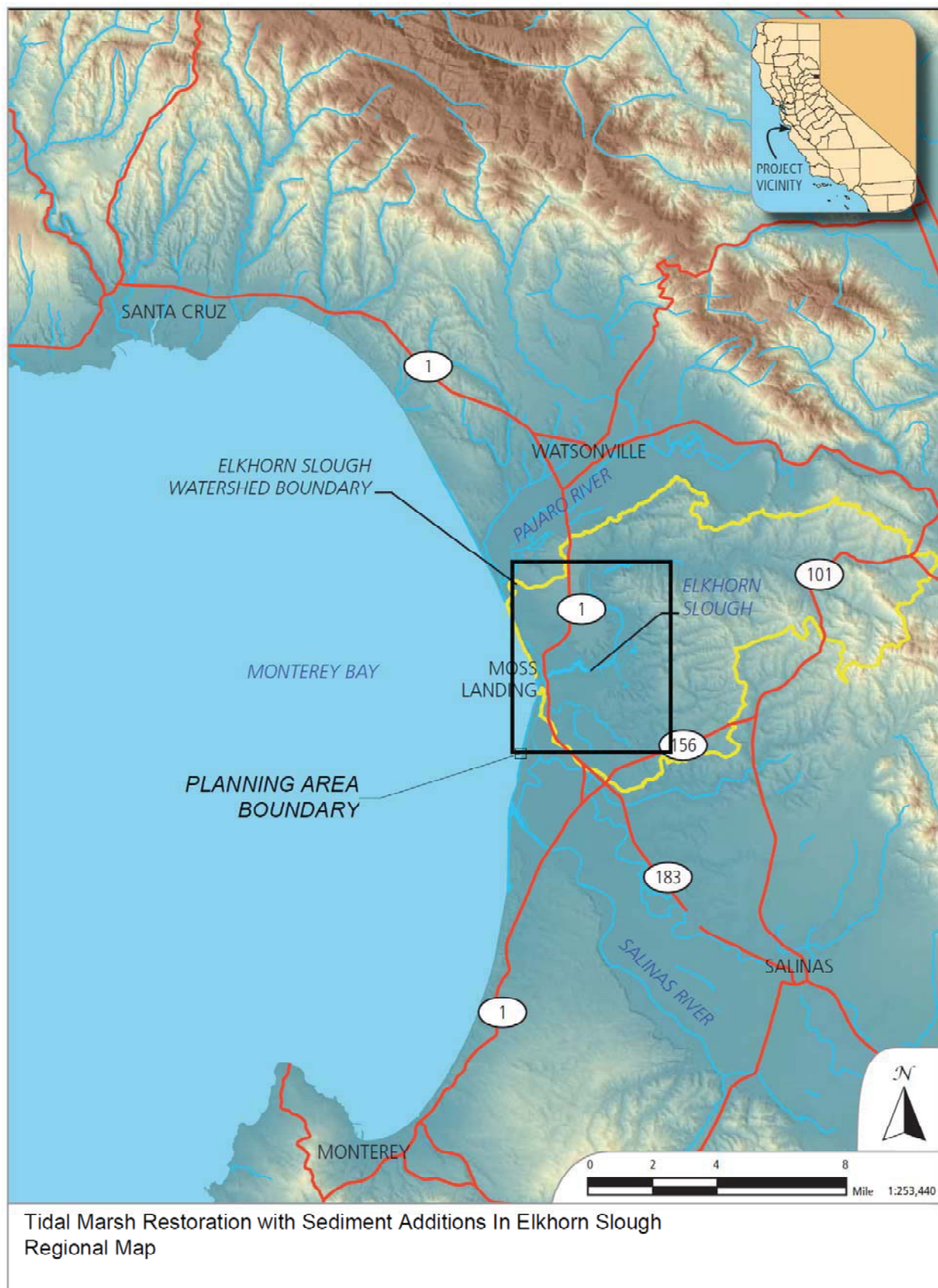
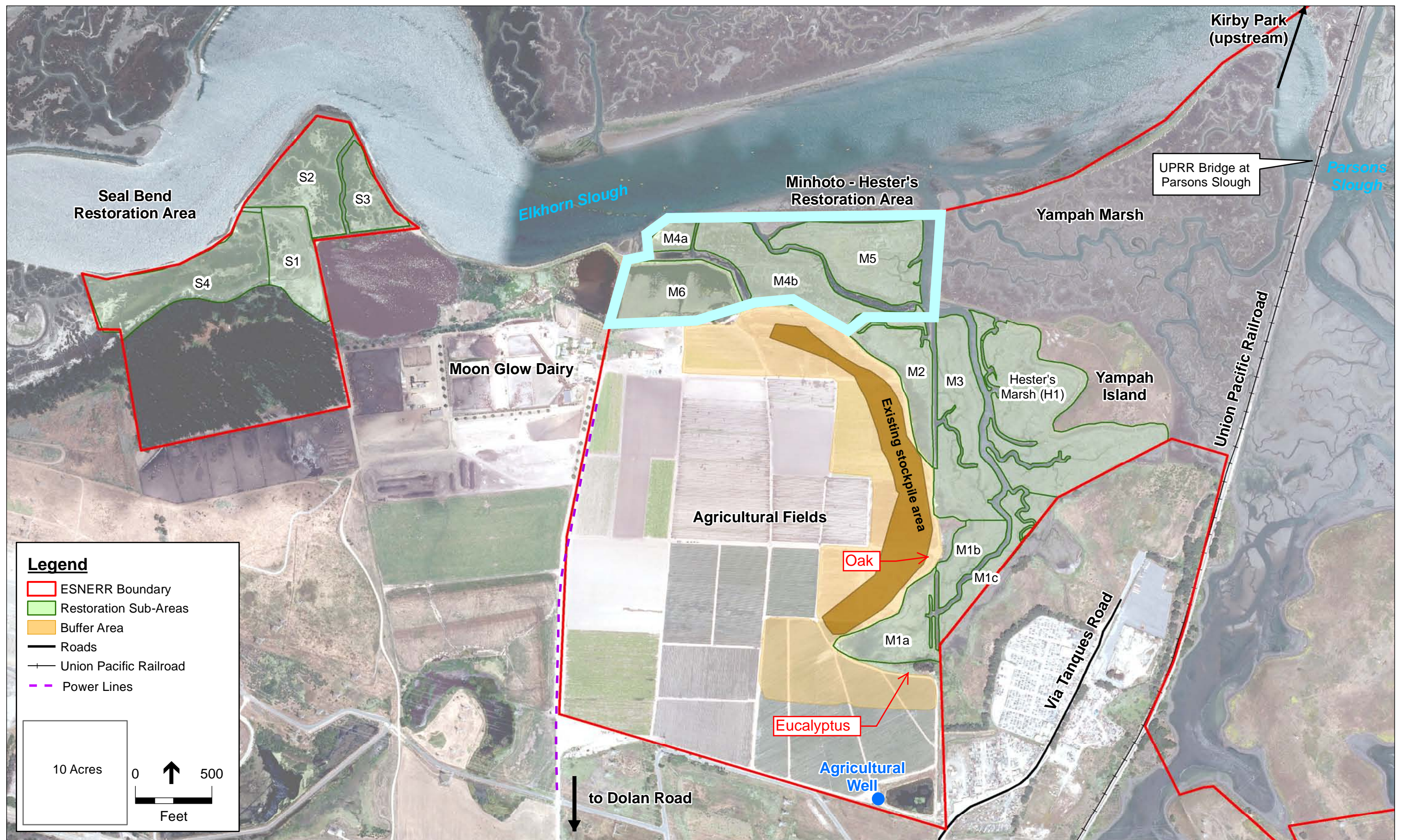


Figure 1. Project Location Map



Elkhorn Slough Tidal Marsh Restoration Project Site Map

Area outlined in light blue is the target are for this proposal.