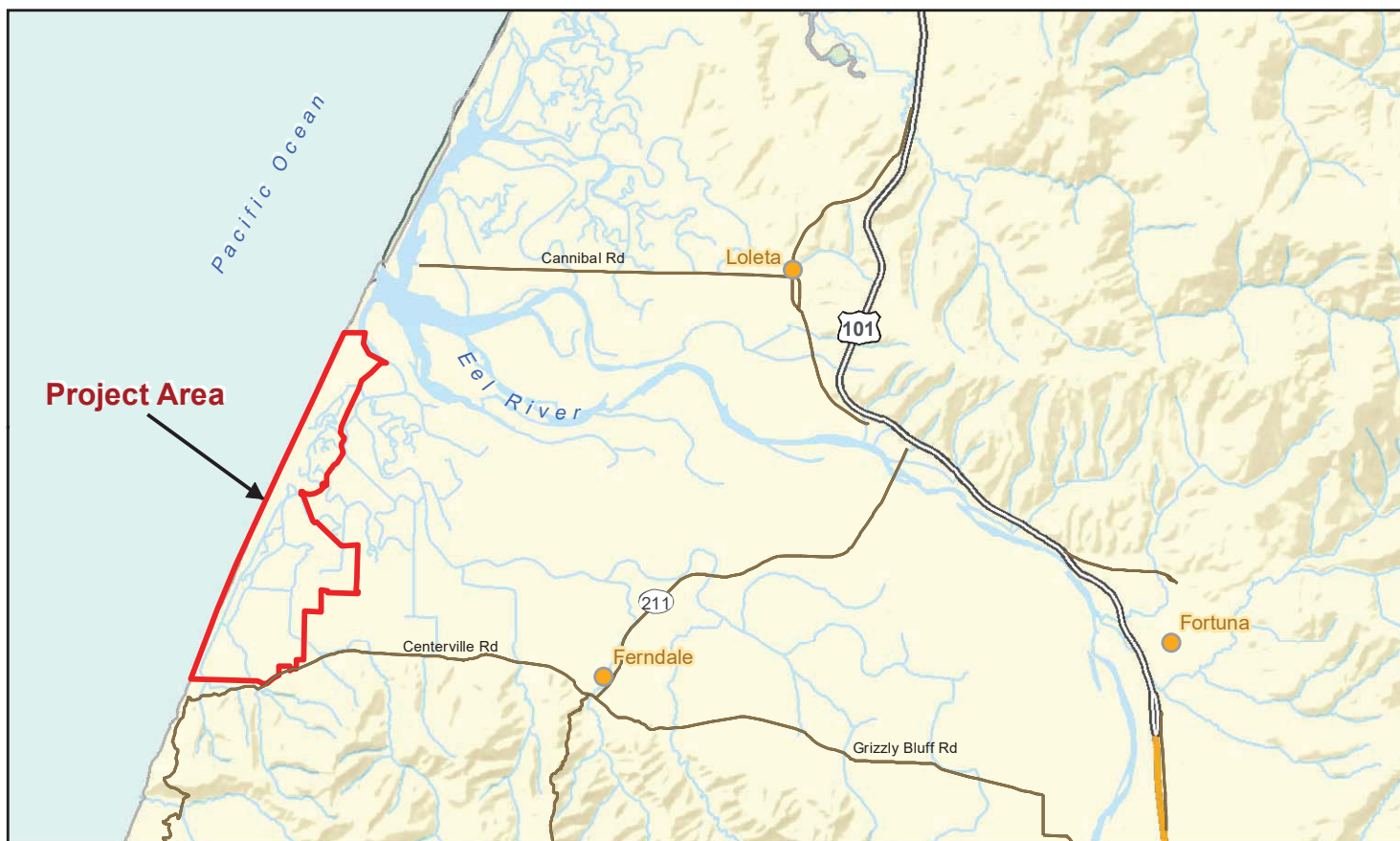
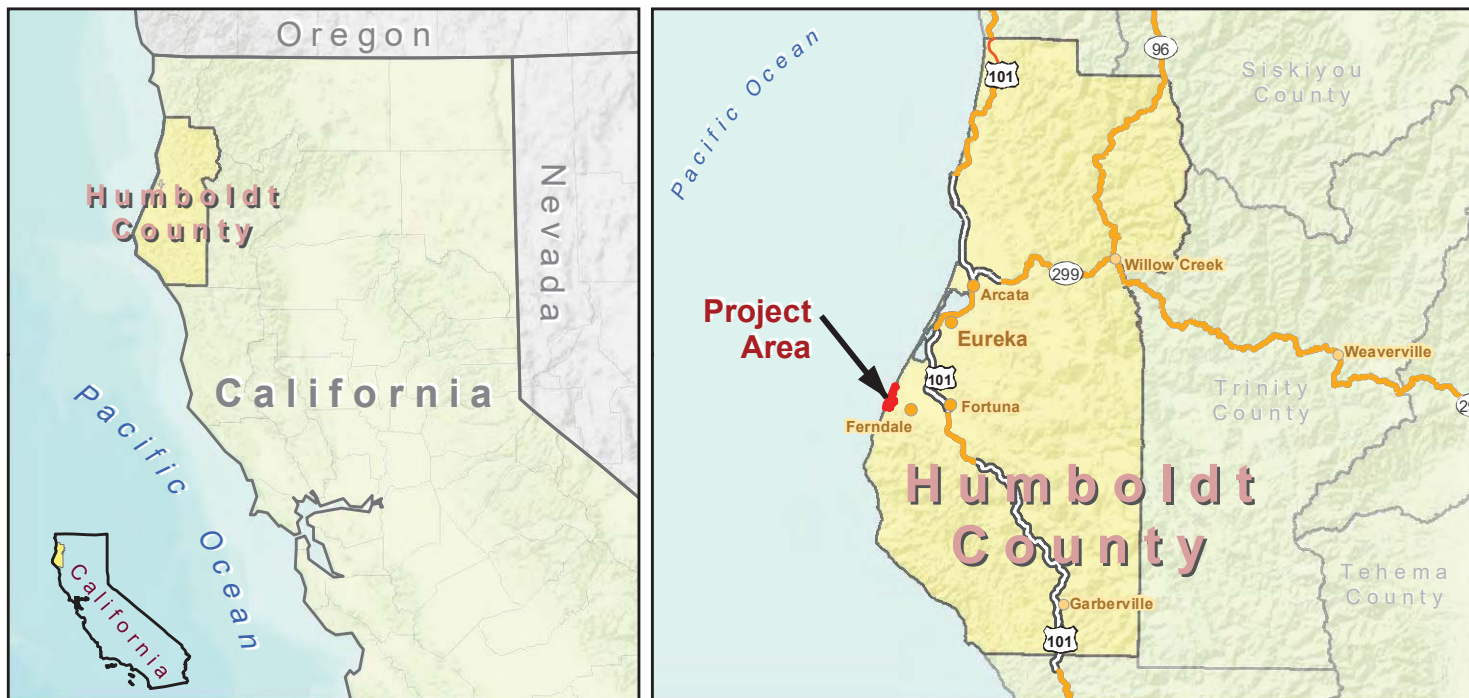


Item 6c - Exhibit 6c1: Site Map and Location



- Project Area
- Humboldt County
- Counties
- Freeway
- Highway
- Roadway
- Waterways

Paper Size 8.5" x 11" (ANSI A)

0 0.5 1 1.5 2
Miles

Map Projection: Lambert Conformal Conic
Horizontal Datum: North American 1983

Grid: NAD 1983 StatePlane California I FIPS 0401 Feet



Eel River Estuary and Centerville Slough Enhancement Project EIR
Job Number 8410882
Revision B
Date 09 Jan 2017

Project Area and Vicinity

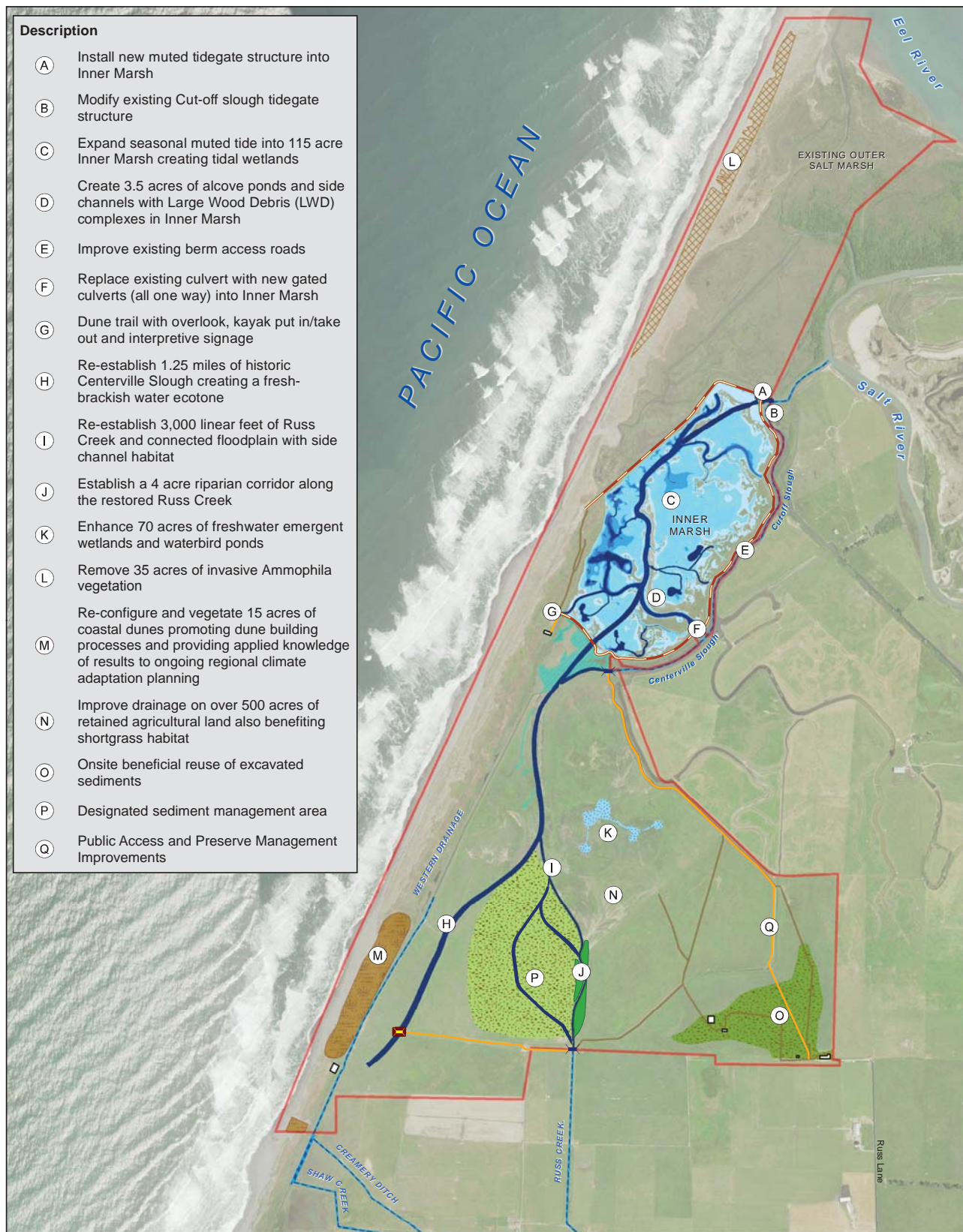
Figure 1

718 Third Street Eureka, CA 95501 T 707 443 8326 F 707 444 8330 E eureka@ghd.com W www.ghd.com

N:\US\Eureka\Projects\Legacy\Projects\1000298 CalTrout\8410882 EREP Ecosystem Enhancement\08-GIS\Maps\Figures\Staff_Recommendation\E1A_VicinityAndLocation.mxd
© 2016. Whilst every care has been taken to prepare this map, GHD makes no representations or warranties about its accuracy, reliability, completeness or suitability for any particular purpose and cannot accept liability and responsibility of any kind (whether in contract, tort or otherwise) for any expenses, losses, damages and/or costs (including indirect or consequential damage) which are or may be incurred by any party as a result of the map being inaccurate, incomplete or unsuitable in any way and for any reason.
Data source: USA Base Maps; USA Census; Humboldt County transportation data, 2008. Created by:jclark2

Description

- (A) Install new muted tidegate structure into Inner Marsh
- (B) Modify existing Cut-off slough tidegate structure
- (C) Expand seasonal muted tide into 115 acre Inner Marsh creating tidal wetlands
- (D) Create 3.5 acres of alcove ponds and side channels with Large Wood Debris (LWD) complexes in Inner Marsh
- (E) Improve existing berm access roads
- (F) Replace existing culvert with new gated culverts (all one way) into Inner Marsh
- (G) Dune trail with overlook, kayak put in/take out and interpretive signage
- (H) Re-establish 1.25 miles of historic Centerville Slough creating a fresh-brackish water ecotone
- (I) Re-establish 3,000 linear feet of Russ Creek and connected floodplain with side channel habitat
- (J) Establish a 4 acre riparian corridor along the restored Russ Creek
- (K) Enhance 70 acres of freshwater emergent wetlands and waterbird ponds
- (L) Remove 35 acres of invasive Ammophila vegetation
- (M) Re-configure and vegetate 15 acres of coastal dunes promoting dune building processes and providing applied knowledge of results to ongoing regional climate adaptation planning
- (N) Improve drainage on over 500 acres of retained agricultural land also benefiting shortgrass habitat
- (O) Onsite beneficial reuse of excavated sediments
- (P) Designated sediment management area
- (Q) Public Access and Preserve Management Improvements



Existing Features

- EREP Project Boundary
- Buildings
- Existing Drainage
- Existing Access Route
- Local Roads
- Existing Bridge

Proposed Features

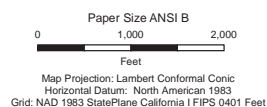
- Proposed Bridge
- Improved Access Road
- Berm with Improved Access Road
- Channel Reestablishment

- Primary Sediment Management Area
- Upland for Sediment Reuse
- Enhanced Freshwater Complex
- Brackish Marsh Off-Channel Habitat

- Non-Native Beach Grass Removal
- Re-establish Dune Configuration
- New Forested Riparian

Seasonal Muted Tide Levels

- Elevation (NAVD 88)
- < 2.5
 - < 3
 - < 3.5
 - < 4
 - < 4.5
 - < 5



Eel River Estuary and Centerville Slough
Enhancement Project

Job Number 8410882
Revision 0
Date 08 Mar 2017

Eel River Estuary Preserve Proposed Project Components

Figure 2