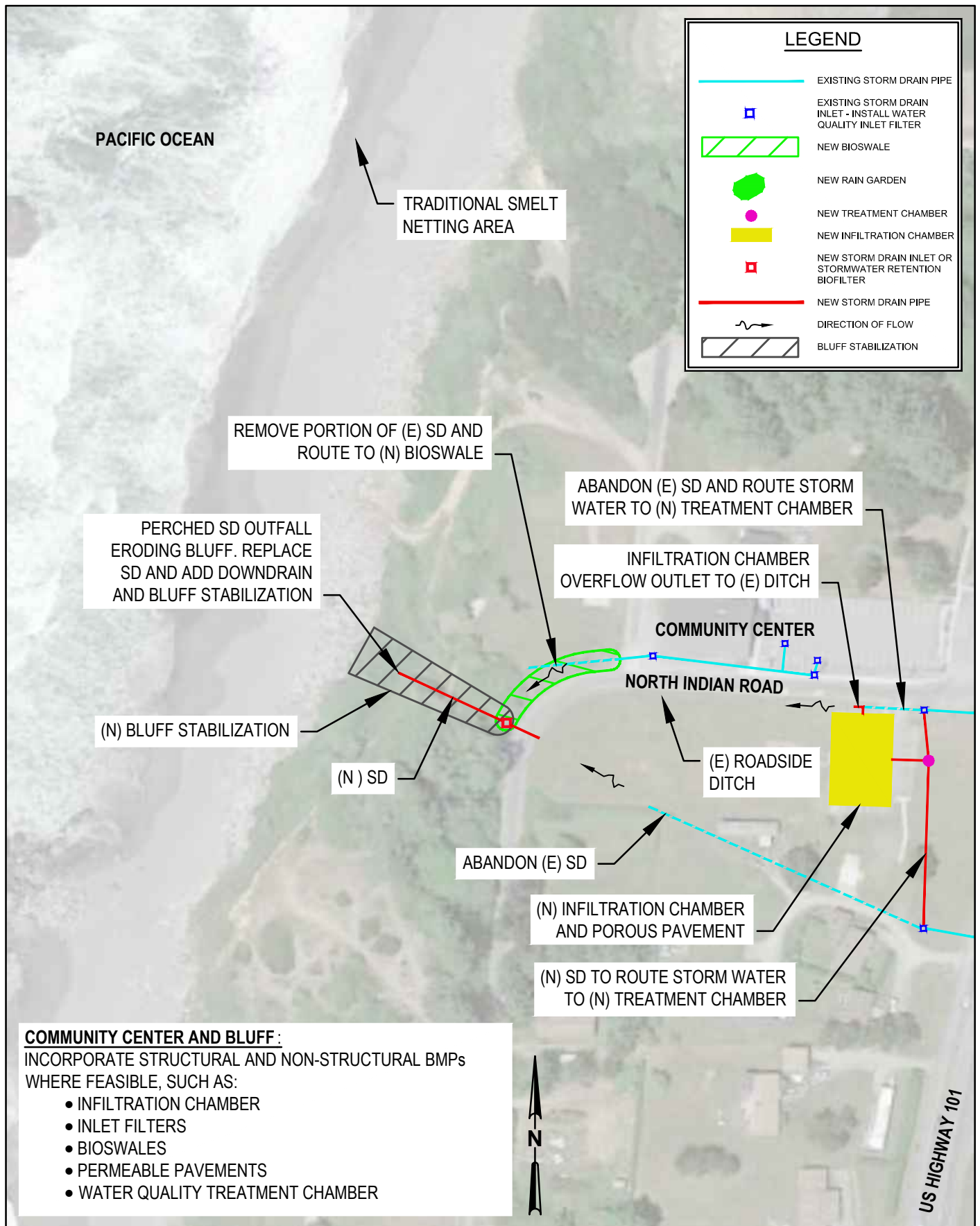


TOLOWA DEE-NI' NATION
OCEAN PROTECTION COUNCIL
PROP 1 PRELIMINARY CONCEPT
LOCATION AND VICINITY MAP

Job Number | 11109191
Revision | A
Date | NOV 2015

Figure 1

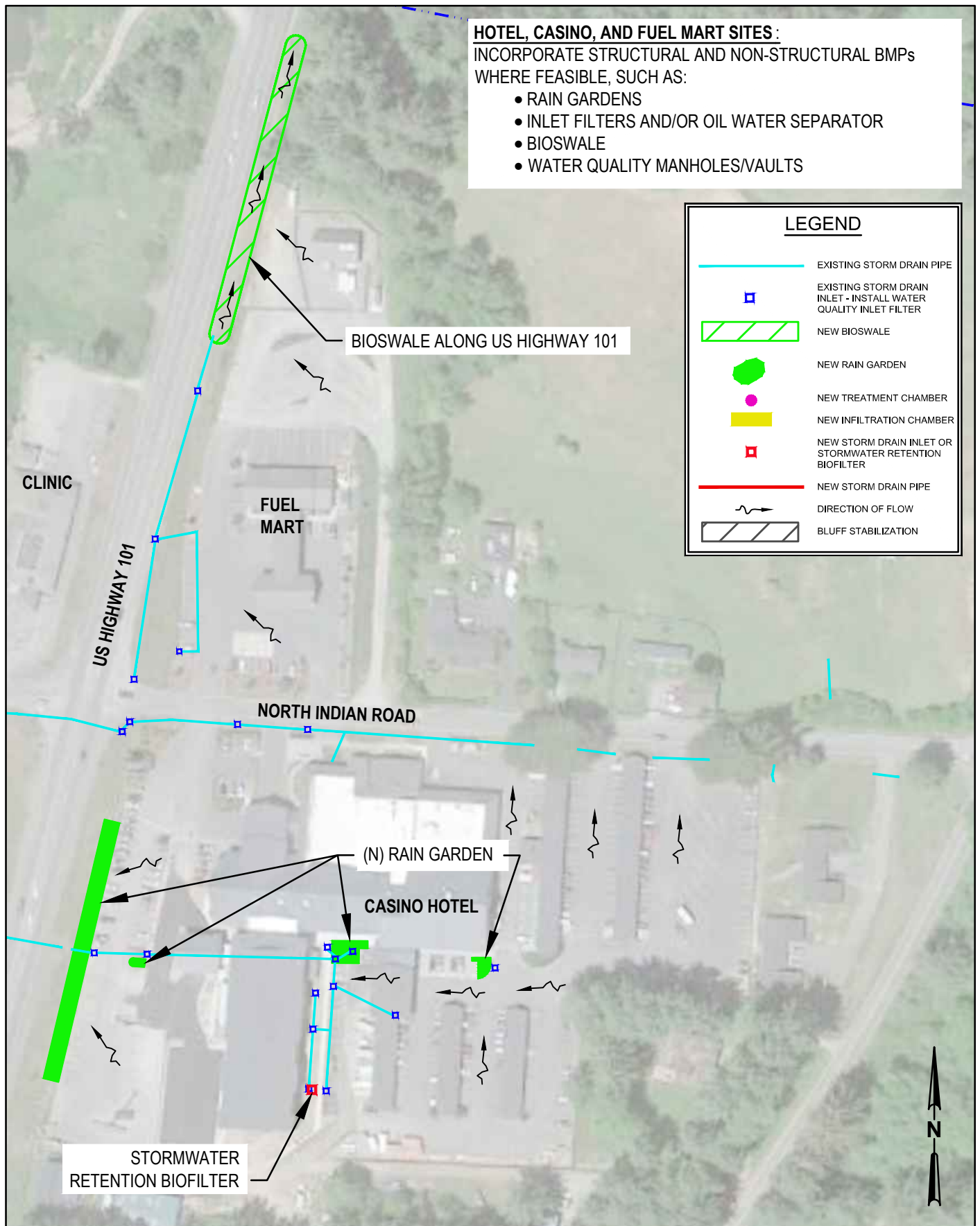


TOLOWA DEE-NI' NATION
OCEAN PROTECTION COUNCIL
PROP 1 PRELIMINARY CONCEPT
IMPROVEMENTS MAP - WEST

Job Number 11109191
Revision A

Date NOV 2015

Figure 2



TOLOWA DEE-NI' NATION
OCEAN PROTECTION COUNCIL
PROP 1 PRELIMINARY CONCEPT
IMPROVEMENTS MAP - EAST

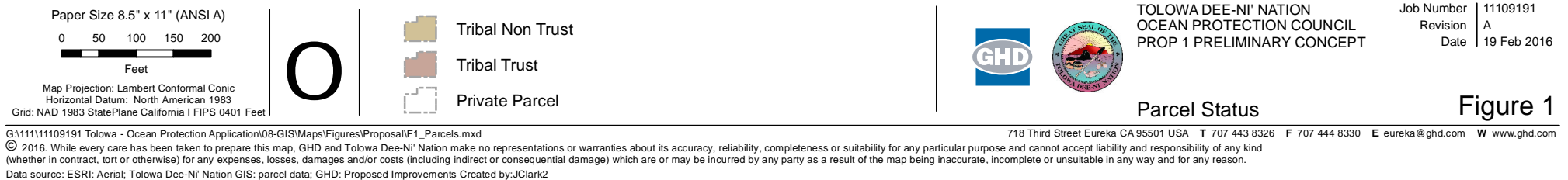
Job Number 11109191

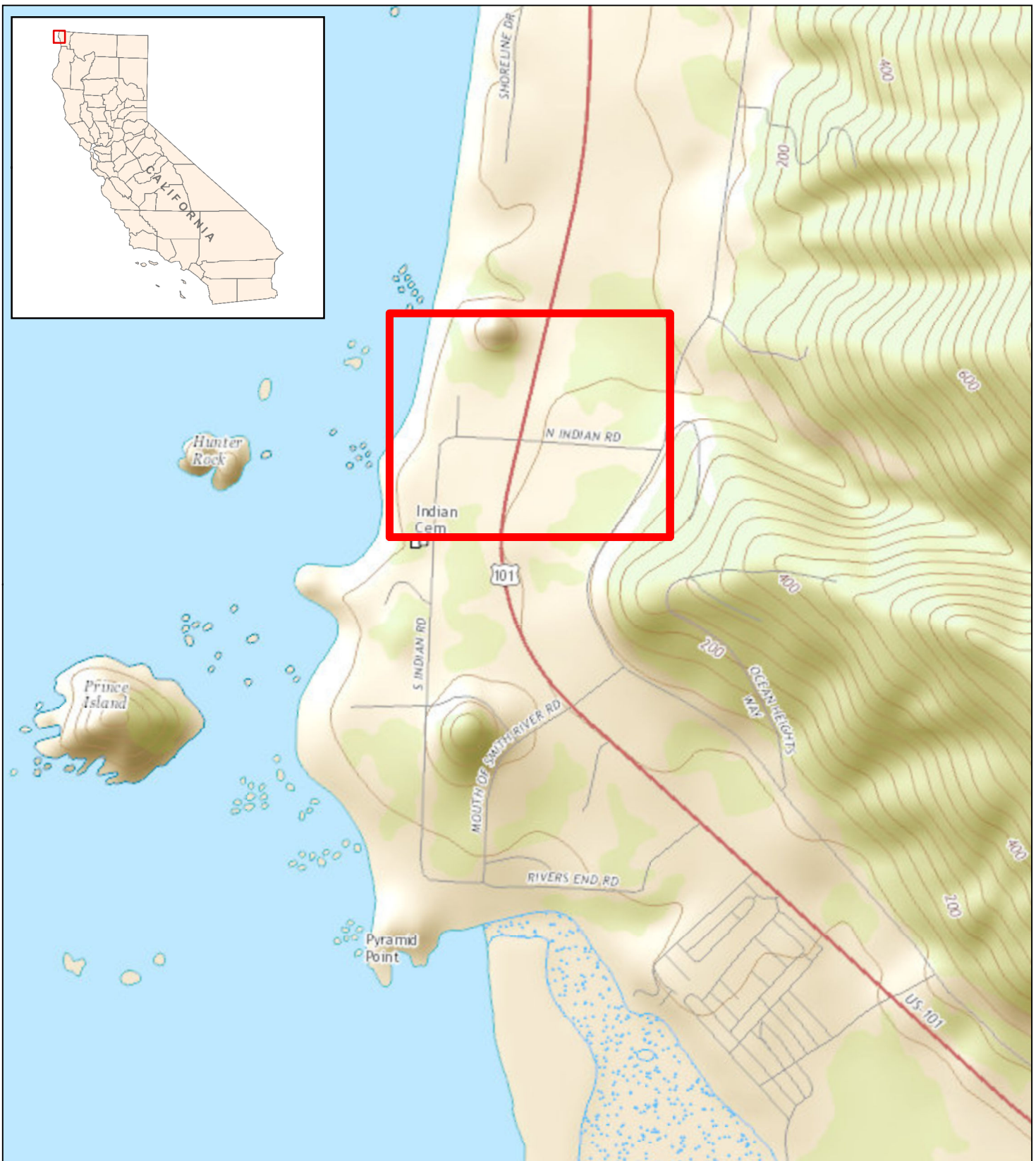
Revision A

Date NOV 2015

Figure 3

718 Third Street Eureka California 95501 USA T 1 707 443 8326 F 1 707 444 8330 W www.ghd.com





Project Area

Paper Size 8.5" x 11" (ANSI A)

0 200 400 600 800 1,000

Feet

Map Projection: Lambert Conformal Conic

Horizontal Datum: North American 1983

Grid: NAD 1983 StatePlane California I FIPS 0401 Feet



TOLOWA DEE-NI' NATION
OCEAN PROTECTION COUNCIL
PROP 1 PRELIMINARY CONCEPT

Job Number 11109191
Revision A
Date 19 Feb 2016

Topographic Map

Figure 2

G:\1111\11109191 Tolowa - Ocean Protection Application\08-GIS\Maps\Figures\Proposal\F2_Topography.mxd

718 Third Street Eureka CA 95501 USA T 707 443 8326 F 707 444 8330 E eureka@ghd.com W www.ghd.com

© 2016. While every care has been taken to prepare this map, GHD makes no representations or warranties about its accuracy, reliability, completeness or suitability for any particular purpose and cannot accept liability and responsibility of any kind (whether in contract, tort or otherwise) for any expenses, losses, damages and/or costs (including indirect or consequential damage) which are or may be incurred by any party as a result of the map being inaccurate, incomplete or unsuitable in any way and for any reason. Data source: USGS The National Map. Created by: JClark2